



THE CROWN

1 Britannia Road Bedford MK42 9ET

Tel: 01234 347 400

Mob: 07526 380 417

thecrown@alex-davis.co.uk

fardoucy.uddin@alex-davis.co.uk

Residential Care Home

For Seven

Adults with Learning Disabilities , ADHD, Mental Health, Complex Health Needs, Bariatric Care, Early Dementia Care, Parkinsons, Epilepsy

Additional Support Needs

The Crown is a newly built care home, centrally located in the heart of Bedford Town

The Alex Davis Care Group, who is the registered provider firmly believe that ***everyone has a right to a home with excellent person centred care and support*** and are committed to promoting our values:

- ◆ Our service users always come first
- ◆ We treat people with dignity & respect
- ◆ We promote choice, independence and a personal centred approach
- ◆ We value and train all of our staff who are key to the delivery of high quality, effective, safe and responsive services



The Crown operates a care planning and review system, each service user is fully assessed and a plan of care and support is formulated, with input and knowledge used from others involved in the lives of the service user.

This plan will cover all areas of a service user's life and is reviewed monthly.

Any persons involved in the care and support of a service user are invited to discuss and review a care plan.



The Crown provides long-term support for seven clients aged 18 plus

The Crown provides services in the following category:

- ◆ Accommodation for persons who require personal care



The Crown provides services in the following categories of service user's

- ◆ Learning Disability and Associated Mental Health Issues
- ◆ Physical Disability, Sensory Impairments.
- ◆ Health needs including Mobility Support.
- ◆ Peg Feeding and Stoma Care

The Home Manager is Fardoucy Uddin and her contact details are as per front cover.

The staffing ratio currently consist of:

- ◆ Home Manager
- ◆ Senior Support Workers
- ◆ Support Workers that work on a 24hr rota
- ◆ Sleep in and a wake night provision when required
- ◆ 24 hour on call for staff support

All staff are trained and hold a minimum qualification of the Care Certificate

Further qualifications & NVQ are actively promoted as part of staff development

Every member of the team, including management, receive annual Mandatory Training and Client specific training, through both online training and classroom training sessions

As part of The Alex Davis Care Group policies and procedures, all staff receive 3 monthly supervisions, annual appraisals and staff competency checks completed by a member of the management team



◆ *The Crown is newly refurbished and has been Fully adapted to support seven service users and is fully wheelchair and hoist Accessible*

◆ *The individual spacious rooms are designed with potential service users needs and preferences in mind*

◆ *Each individual spacious studio flat consists of a kitchenette (for the more independent service user) and all rooms have en-suite facilities. All the appliances in the kitchenette can be separately controlled for safety but designed with individual client's requirements in mind*

◆ *Each unit has its own personalised bathroom area which consist of a wet room, shower or bath, toilet and hand wash basin*



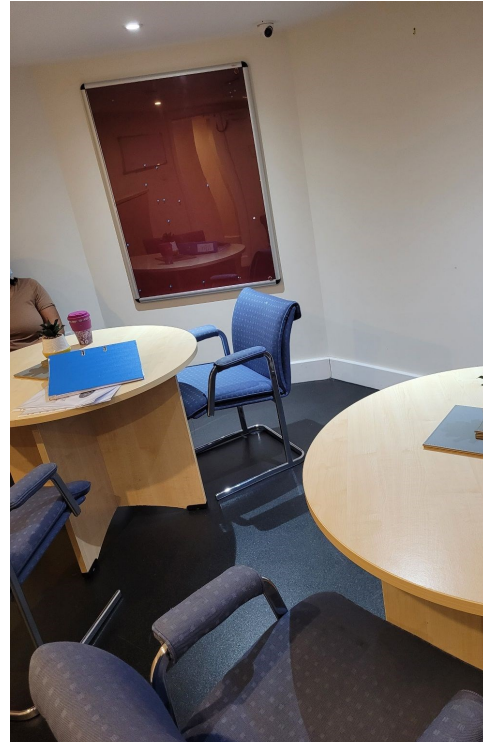
◆ *Three of the bedrooms are suitable for wheelchair users with their own large wet room, making accessibility manageable for the client ensuring to maintain their dignity and independence when using the facilities*



A lift has been installed to enable easy access to all floors

The lift has the capacity to ensure space for wheelchair users and staff comfortably

There is a large push button system to enable clients to be able to use the lift independently,



The Crown comprises of three floors with the lounge, dining area, two kitchens to cater for any dietary requirements and staff offices on the basement level.

On the ground floor there is the entrance to the building and access to the garden via a ramp

There are four service user rooms on the ground floor alongside the laundry and further access to the enclosed back garden

There are accessible toilets available alongside the lift to all levels

The Crown prides itself on ensuring high standards of cleanliness and the safety of its environment

The Crown strives to ensure that the service is lead with the service users wishes, choices and preferences foremost. With this in mind the service offers:

- ◆ ***Monthly Service User meetings with focus on “we said”***
- ◆ ***Planning and reviewing of well balanced & nutritional menus, completed with the service users input and all dietary requirements catered for***
- ◆ ***Suggestion Box***
- ◆ ***Information notice board & leaflets***
- ◆ ***Activity program, social activities, day trips & holidays***



The Alex Davis Care Group
Ari Davis - Managing Director

office@alex-davis.co.uk

www.alex-davis.co.uk